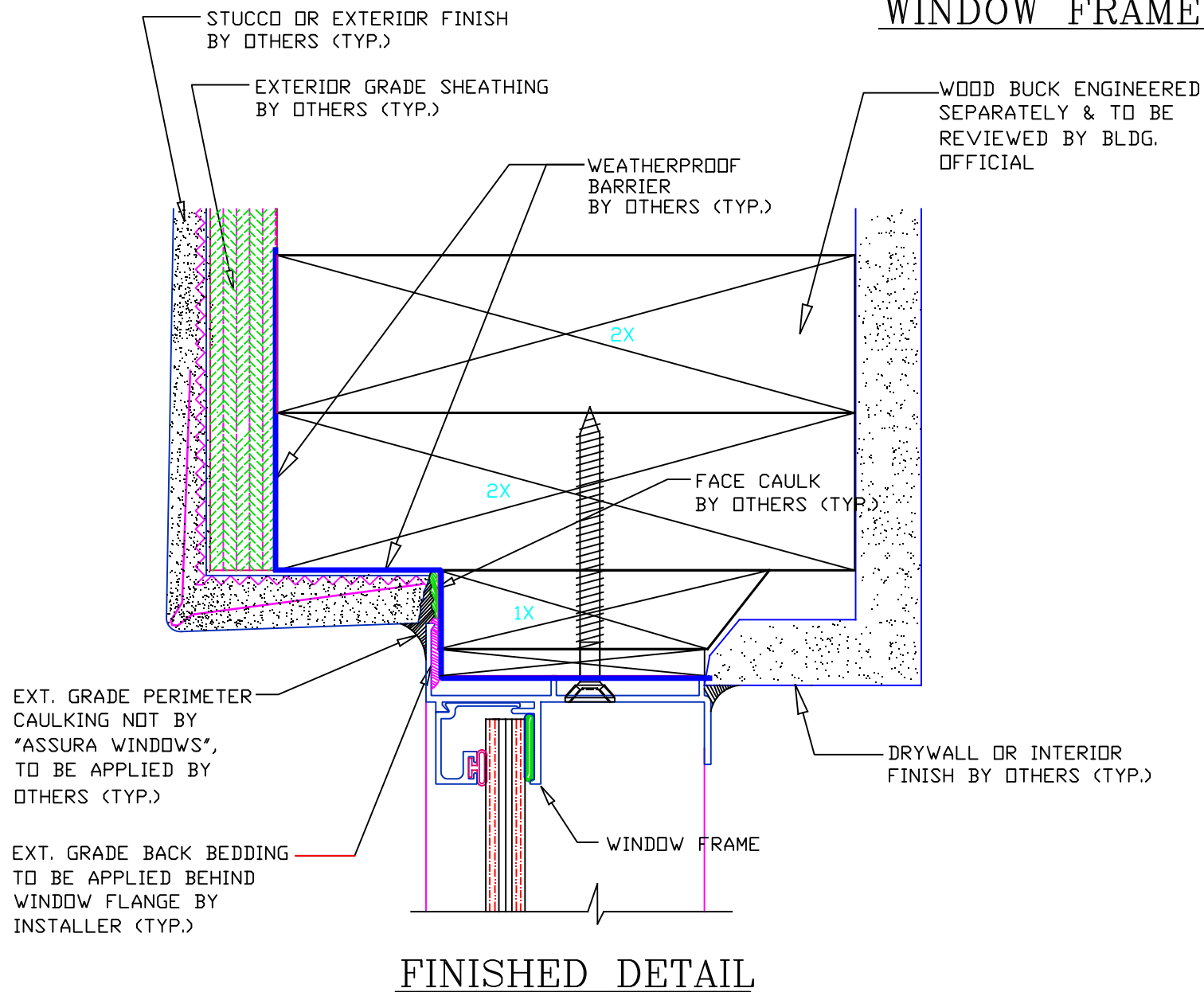
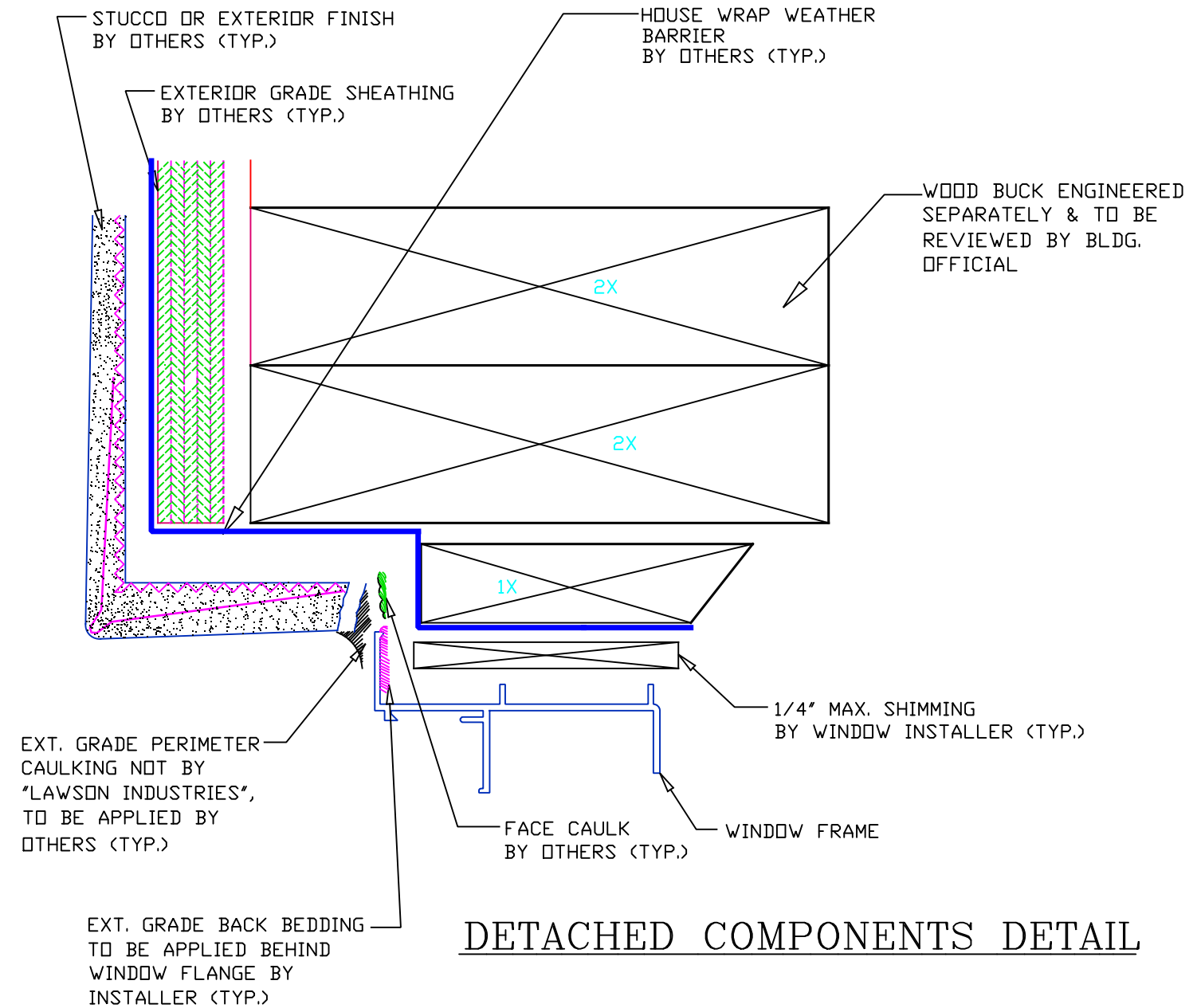


WINDOW FRAME INSTALLATION DETAIL



FINISHED DETAIL



DETACHED COMPONENTS DETAIL

WINDOW INSTALLATION NOTES:

1. THE WINDOW OPENING MUST BE PROTECTED WITH A CODE APPROVED FELT OR MOISTURE/WEATHER BARRIER (HOUSE WRAP), APPROX. 6" WIDE THROUGHOUT ENTIRE PERIMETER OF THE WINDOW OPENING. (NOT BY LAWSON INDUSTRIES)
2. THE 1X MOUNTING OPENING MUST BE PROTECTED WITH A A MOISTURE/WEATHER BARRIER (Wrap), APPROX. 4" WIDE THROUGHOUT ENTIRE PERIMETER OF THE WINDOW OPENING. (NOT BY ASSURA WINDOWS)
3. THE WINDOW FRAME FLANGE TO BE BACK-BEDDED W/ AN EXT. GRADE CAULK THROUGHOUT THE ENTIRE PERIMETER OF FLANGE BY WINDOW INSTALLER (TYP.)
4. THE EXPOSED EXT. PERIMETER OF THE WINDOW FRAME TO BE SEALED W/ AN APPROVED EXTERIOR GRADE CAULK BY OTHERS (TYP.)
5. NO NAILS OR STAPLES ALLOWED ON OUTSIDE SILL SURFACE
6. ALL OPEN EDGES OF CORNER WRAP (Fig. 1) TO BE COVERED WITH STRIPS OF WRAP WHICH SHALL BE TAPED INTO PLACE (Fig. 2).

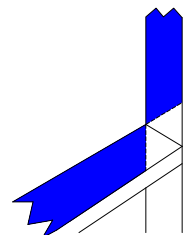


Fig. 1

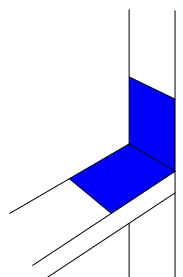


Fig. 2

Revision Notes: 				Assura Windows & Doors, LLC 1543 N. Powerline Road Pompano Beach, Fl. 33069 Tel. (305) 887-2646	
Drawn By: T. J. SOTOS, P.E.	Date Drawn: 2/8/18	FLANGE WINDOW INSTALLATION DETAILS INTO 2X WOOD FRAME AND RECESSED WINDOW FRAME			
Revised By:	Date Revised:	Product Reference Number:		Drawing Number: LID-100801	Sheet: 1 OF 1
Revision Level:	Scale:	Product Reference Number:		Drawing Number: LID-100801	Revision #: